

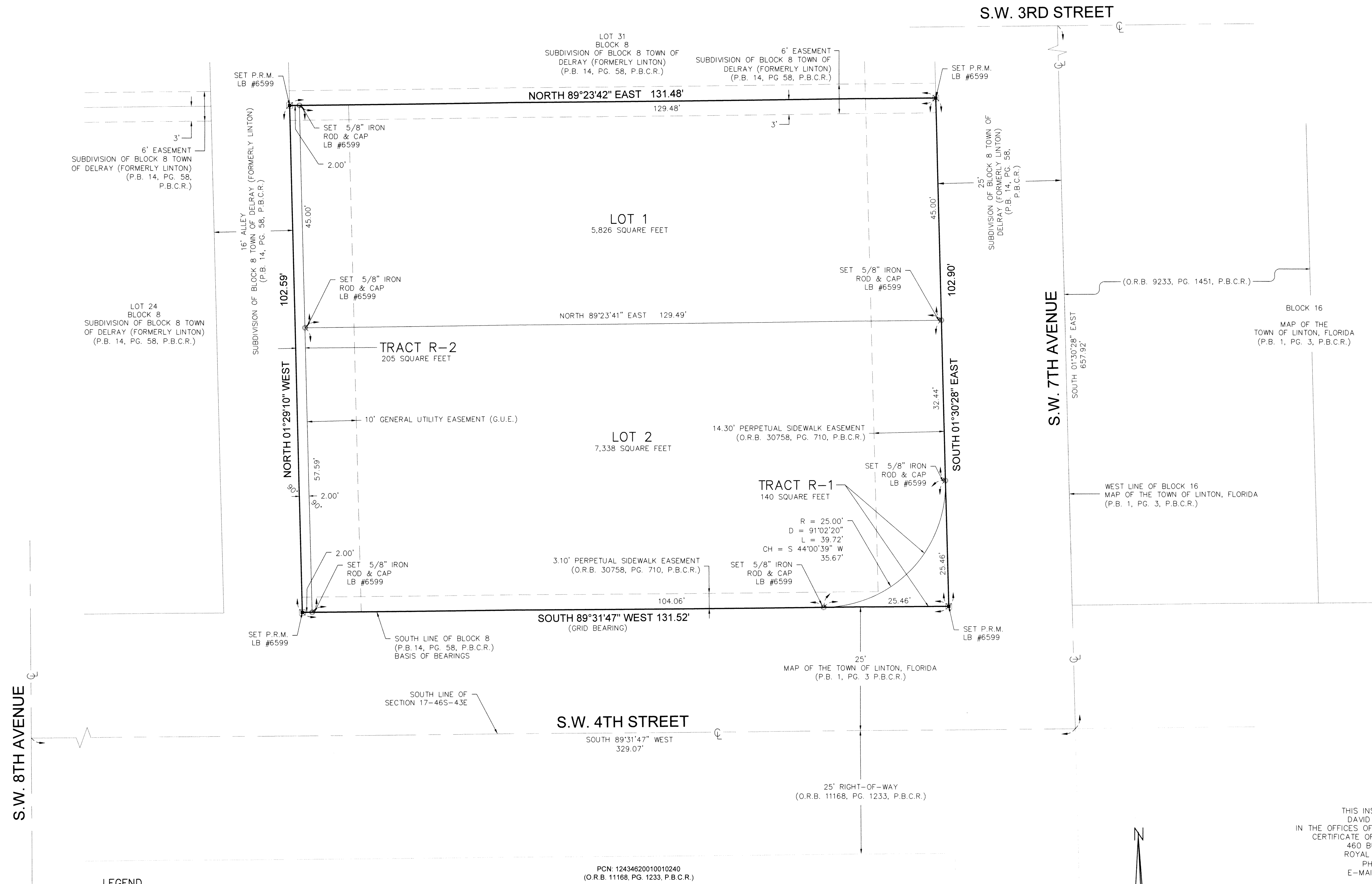
# COREY ISLE

BEING A RE-PLAT OF LOTS 26, 27, 28, 29 AND 30, BLOCK 8, SUBDIVISION OF BLOCK 8 TOWN OF DELRAY (FORMERLY LINTON) ACCORDING TO THE PLAT THEREOF, RECORDED IN PLAT BOOK 14, PAGE 58 OF THE PUBLIC RECORDS OF PALM BEACH COUNTY, FLORIDA. LYING WITHIN SECTION 17, TOWNSHIP 46 SOUTH, RANGE 43 EAST, CITY OF DELRAY BEACH, PALM BEACH COUNTY, FLORIDA.  
SHEET 2 OF 2

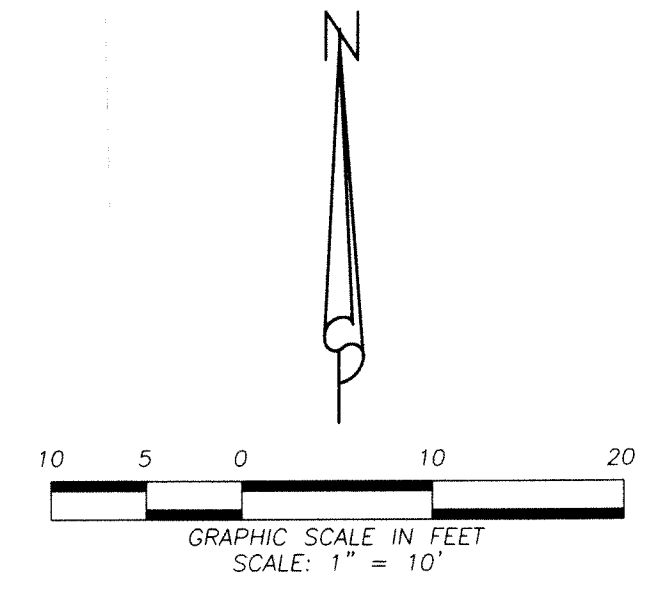
143

STATE OF FLORIDA )  
COUNTY OF PALM BEACH ) S.S.

THIS INSTRUMENT WAS FILED FOR RECORD AT \_\_\_\_\_ M. THIS \_\_\_\_\_ DAY OF \_\_\_\_\_, 20\_\_\_\_ AND DULY RECORDED IN: PLAT BOOK \_\_\_\_\_ ON PAGE \_\_\_\_\_ SHARON R. BOCK CLERK & COMPTROLLER PALM BEACH COUNTY BY: \_\_\_\_\_ DEPUTY CLERK



LEGEND	
CH	= CHORD DIRECTION & DISTANCE
D	= CENTRAL ANGLE
G.U.E.	= GENERAL UTILITY EASEMENT
L	= ARC LENGTH
LB	= LICENSED BUSINESS
LS	= LICENSED SURVEYOR
O.R.B.	= OFFICIAL RECORD BOOK
P.B.	= PLAT BOOK
P.B.C.	= PALM BEACH COUNTY
P.B.C.R.	= PALM BEACH COUNTY RECORDS
P.C.N.	= PARCEL CONTROL NUMBER
PG.	= PAGE(S)
P.L.S.	= PROFESSIONAL LAND SURVEYOR
P.R.M.	= PERMANENT REFERENCE MONUMENT
P.S.M.	= PROFESSIONAL SURVEYOR & MAPPER
R	= RADIUS
S.L.S.E.	= SEWER LIFT STATION EASEMENT
U.E.	= UTILITY EASEMENT
CL	= CENTERLINE
■	= PERMANENT REFERENCE MONUMENT (P.R.M.) 4" DIAMETER CONCRETE MONUMENT WITH P.K. NAIL IN BRASS DISC STAMPED "PRM LB 6599"
○	= SET 5/8"X18" IRON ROD WITH CAP STAMPED LB #6599



THIS INSTRUMENT WAS PREPARED BY: DAVID A. BOWER, P.S.M. LS #5888 IN THE OFFICES OF DENNIS J. LEAVY AND ASSOCIATES, INC. CERTIFICATE OF AUTHORIZATION NUMBER: LB #6599 460 BUSINESS PARK WAY, SUITE B ROYAL PALM BEACH, FLORIDA 33411 PHONE: (561) 753-0650 E-MAIL: SURVEY@DJLASURVEY.NET

**DENNIS J. LEAVY & ASSOCIATES, INC.**  
**LAND SURVEYORS AND MAPPERS**

460 BUSINESS PARK WAY \* SUITE B \* ROYAL PALM BEACH, FL \* 33411  
PHONE: (561) 753-0650 E-MAIL: SURVEY@DJLASURVEY.NET

SCALE: AS SHOWN	CHECKED BY: DAB	DATE: 06/12/19
DRAWN BY: AV/MT	JOB NO.: 19-014-003	

PCN: 12434620010010240 (O.R.B. 11168, PG. 1233, P.B.C.R.)